



JANUARY - DECEMBER 2017

This Sustainability Report has been specifically designed for you and will cover a range of topics from emissions to health and wellbeing.

CONTENTS:

01. EMISSIONS & WASTE

We highlight all of the direct and indirect emissions as well as waste for this period.

02. CHARITY, TRAINING & EMPLOYEES

An overview of our charity contribution, training figures and our focus on local employees.

03. HEALTH & WELLBEING

A look at the five elements of our health strategy.

01. EMISSIONS & WASTE

2,375,000 sheets of paper purchased for Morson International

1,290,000 sheets - Head Office

1,085,000 sheets - MI Branches excluding Head Office



WASTE

Total percentage recycled YTD 2017
96%

SCOPE 1 – DIRECT EMISSIONS

GAS

12.87 tons of CO₂ Branches
48.27 tons of CO₂ HO
= **61.14 tons of CO₂**

PETROL & DIESEL

484.98 tons of CO₂



SCOPE 2 – INDIRECT EMISSIONS

ELECTRICITY

118.42 tons CO₂ Branches
563.76 tons CO₂ HO
= **682.18 tons CO₂**

SCOPE 3 – OTHER INDIRECT EMISSIONS

AIR

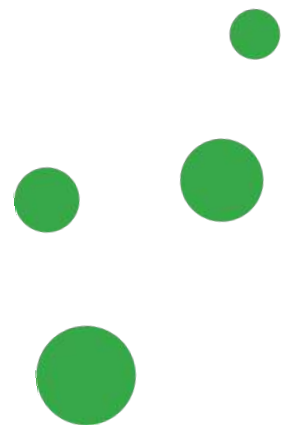
319.77 tons of CO₂

RAIL

10.8g tons of CO₂

MILEAGE

80.97 tons of CO₂



TOTAL

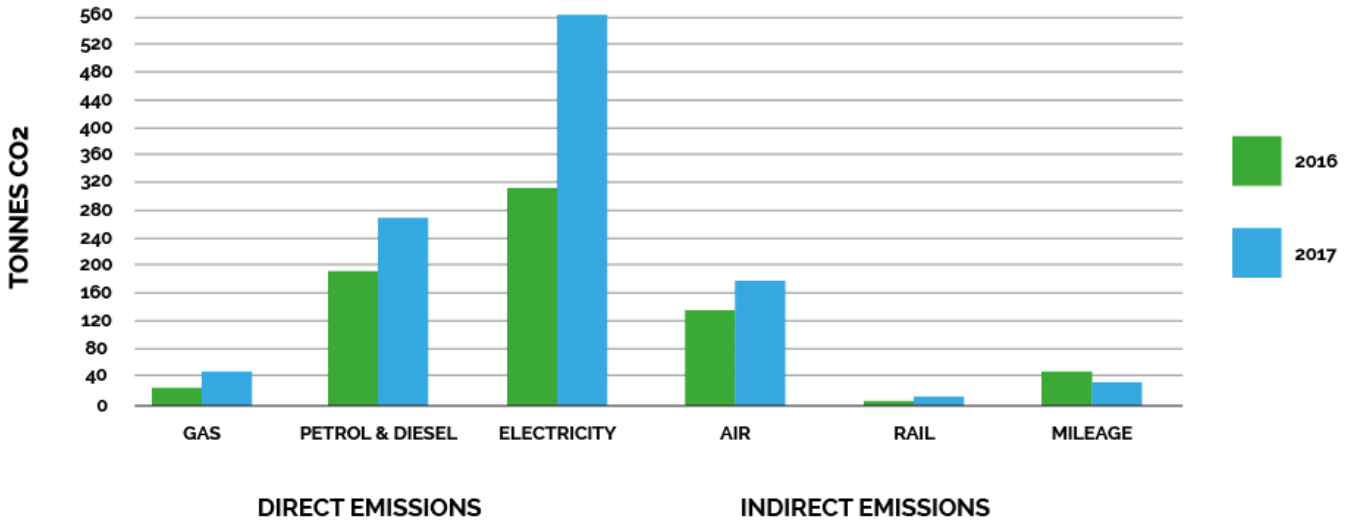
1639.93 tonnes of CO₂ produced in 2017 annual rolling average by Morson International.

This equates to 3.13 tonnes of CO₂ produced per member of staff.

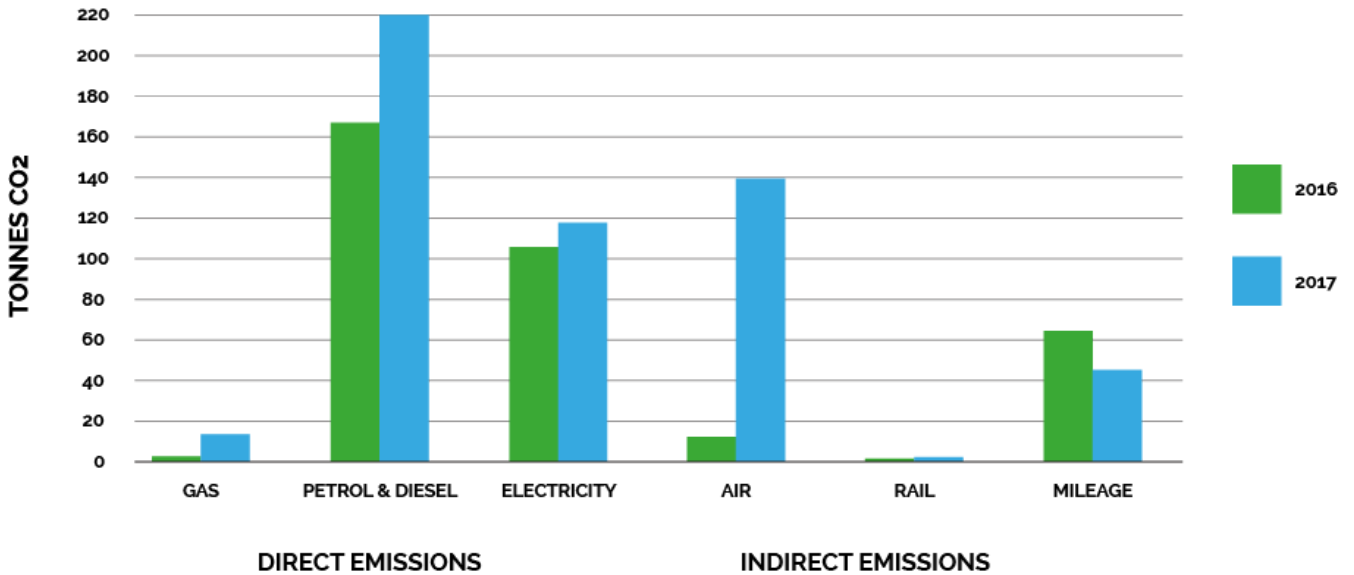
MORSON.COM

01. EMISSIONS COMPARISON

EMISSIONS COMPARISON 2016 - 2017 (ADAMSON HOUSE)



EMISSIONS COMPARISON 2016 - 2017 (BRANCHES)



02. CHARITY, TRAINING & EMPLOYEES

£55,000 raised for
charities in 2017



Morson International in
Manchester employs
278 local employees
(approx. 10 miles)

CHARITY

£55,000 raised for charities in 2017

TRAINING

For 2017 100% completed E-learning H&S,
Equality and Diversity, DSE online training

31 Apprentices started with Morson in 2017

11 Morson International Staff commenced ILM
Level 3 Diploma Management Courses in 2017

Morson International trained a further 21
people in 2017

EMPLOYEES

523 employees in Morson International
Morson International in Manchester employs
278 local employees (approx. 10 miles)

MORSON.COM



03. HEALTH & WELLBEING

There are five elements to our health strategy:

EMOTIONAL
PHYSICAL
FINANCIAL
SOCIAL
WORK



Morson International is looking after the health and wellbeing of its employees. The five elements of the health and wellbeing strategy are:

PHYSICAL

Various offices have organised physical activities such as:

Weekly workouts and Yoga
Bike Rides
Football teams and tournaments
Health checks



EMOTIONAL

Managers and employee training – How to identify and deal with stress, employee's assistance programme, Yoga. Specialised Mental Health training for staff.

SOCIAL

Community Christmas Charity Market was held in December.

FINANCIAL

Employees assistance programme, childcare vouchers, Cash Plan, Pension clinics

WORK

RESPECT campaign, home safe work safe safety initiative, Succession planning, career planning

MORSON.COM

