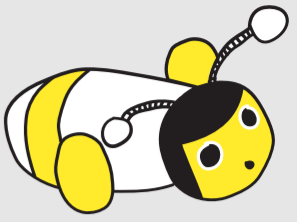
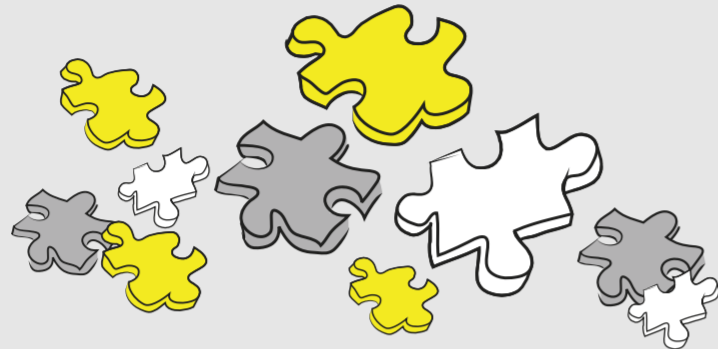


Company culture

factors to look out for:



1



Observe how the team communicates with one another, including among peers and managers.

2

Identify how the team builds relationships with one another, whether it is through digital communications or in person.



3

Look at how the organisation arrives at a decision – be it through formal process via meetings or informally.

4

Carefully observe how the organisation reacts to change – be it supportive or resistant to new ideas.

